

CODE			CODE		
BX0430		transformer 230 V - 35 Vac	1	BX0520	cable 50 mm 2 - 1,5 m
BX0431		transformer 120 V - 35 Vac	1	BX0695	remote control



TECHNICAL DATA	
	S62490D00
V PEAK	113
	Argon
	0,5÷3,2 mm .020" ÷ 1/8"
X 100%	320A DC - 250A AC
	4 bar
	1.5 l/min

TECHNICAL DATA	
	S12490D00
X 100%	400A DC - 300A AC
TECHNICAL DATA	
	SK2490A00
X 35%	400A DC - 300A AC
V PEAK	113
	Argon
	0,5 ÷ 4,0 mm .020" ÷ 5/32"
	4 bar
	1.5 l/min

TECHNICAL DATA	
	S92490D00
V PEAK	113
	Argon
	0,5÷3,2 mm .020" ÷ 1/8"
X 100%	250A DC - 220A AC
	4 bar
	1.5 l/min

CODE		
S62490D00	DUALTIG RC SUPER 20	1
BX0455	Potentiometer 1K	1
FA0026	liner nut M10x1	10
FE0169	wire guide holder 20HC	1
GM0096	graphite liner	200
MD0222-08	Ø 0,8 Cu	5
MD0222-10	Ø 1,0 Cu	5
MD0222-12	Ø 1,2 Cu	5
TC0014	tig nozzle	10
TD0005-24	tig collet	10
TE0003-24	tig collet body	10
TG0912	tig torch head 20HC	1
TT0170	Tip kit	1

CODE		
S12490D00	DUALTIG RC SUPER 18	1
SK2490A00	DUALTIG RC 26	1
BX0455	Potentiometer 1K	1
FE0179	wire guide holder 18HC/26	1
GM0096	graphite liner	200
MD0222-08	Ø 0,8 Cu	5
MD0222-10	Ø 1,0 Cu	5
MD0222-12	Ø 1,2 Cu	5
TF0026	tig torch head	1
TG0913	tig torch head 18HC	1
TT0170	Tip kit	1

CODE		
S92490D00	AUTOTIG 20	1
FE0189	wire guide holder	1
GM0096	graphite liner	200
MD0222-08	Ø 0,8 Cu	5
MD0222-10	Ø 1,0 Cu	5
MD0222-12	Ø 1,2 Cu	5
TG1010	tig torch head	1
TT0170	Tip kit	1

TPRO SUPER 20

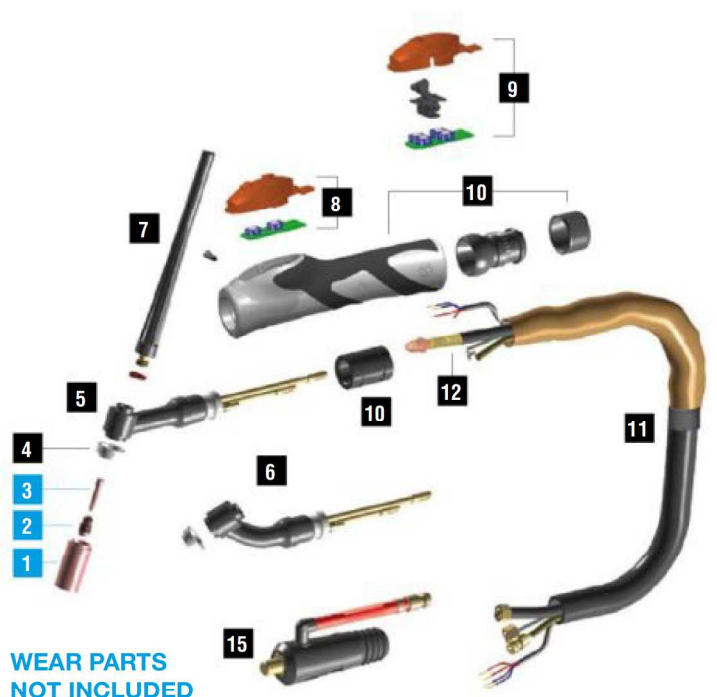
CE EN60974-7



CODE	↔			
H62410-00	4 m	12.5'	dual	TSK 50-1/4G
H62810-00	8 m	25'	dual	

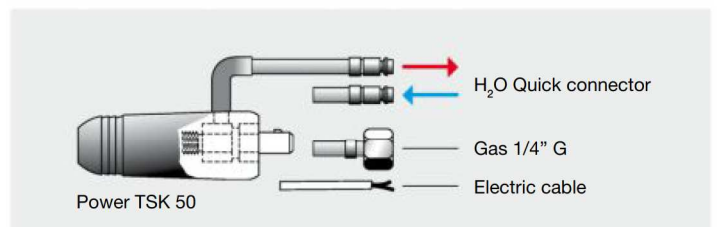
TECHNICAL DATA	
	TPRO SUPER 20
	0,85 kg 1.87 lb
	113
	Argon
	0,5 ÷ 3,2 mm .020" ÷ 1/18"
	320A DC - 250A AC
	4 bar
	1.5 l/min

CODE		Description	Quantity
4		insulator	10
5		tig 20HC torch head	1
6		tig 20HC flex torch head	1
7		back cap 147,5 mm	10
7		O-ring Ø 4,5x2 mm	10
8		kit Tpro Dual	1
9		kit Tpro Multi	1
10		reduction	1
10		cable joint	1
10		screw	50
10		Tpro handle	1
11		cable assembly - 4 m / 12.5'	1
11		cable assembly - 8 m / 25'	1
12		power cable - 4 m / 12.5'	1
12		power cable - 8 m / 25'	1
15		TSK 50 - quick plug	1



WEAR PARTS NOT INCLUDED

Starter kits page 360
Wear parts page 361



TUNGSTEN ELECTRODES

UNI EN ISO 6848-2004



CODE		\varnothing	\longleftrightarrow	
TR0001-10	WP	1 mm	150 mm	1
TR0001-16		1,6 mm	150 mm	1
TR0001-20		2 mm	150 mm	1
TR0001-24		2,4 mm	150 mm	1
TR0001-32		3,2 mm	150 mm	1
TR0001-40		4 mm	150 mm	1
TR0001-48		4,8 mm	150 mm	1
TR0002-10		WP	1 mm	175 mm
TR0002-16	1,6 mm		175 mm	1
TR0002-20	2 mm		175 mm	1
TR0002-24	2,4 mm		175 mm	1
TR0002-32	3,2 mm		175 mm	1
TR0002-40	4 mm		175 mm	1
TR0002-48	4,8 mm		175 mm	1
TR0002-64	6,4 mm		175 mm	1
TR0007-10	WC20	1 mm	150 mm	1
TR0007-16		1,6 mm	150 mm	1
TR0007-20		2 mm	150 mm	1
TR0007-24		2,4 mm	150 mm	1
TR0007-32		3,2 mm	150 mm	1
TR0007-40		4 mm	150 mm	1
TR0007-48		4,8 mm	150 mm	1
TR0008-10		WC20	1 mm	175 mm
TR0008-16	1,6 mm		175 mm	1
TR0008-20	2 mm		175 mm	1
TR0008-24	2,4 mm		175 mm	1
TR0008-32	3,2 mm		175 mm	1
TR0008-40	4 mm		175 mm	1
TR0008-48	4,8 mm		175 mm	1
TR0011-10	WL10		1 mm	150 mm
TR0011-16		1,6 mm	150 mm	1
TR0011-20		2 mm	150 mm	1
TR0011-24		2,4 mm	150 mm	1
TR0011-32		3,2 mm	150 mm	1
TR0011-40		4 mm	150 mm	1
TR0011-48		4,8 mm	150 mm	1
TR0012-16		WL10	1,6 mm	175 mm
TR0012-24	2,4 mm		175 mm	1
TR0012-32		3,2 mm	175 mm	1

CODE		\varnothing	\longleftrightarrow		
TR0013-10	WL15	1 mm	150 mm	1	
TR0013-16		1,6 mm	150 mm	1	
TR0013-20		2 mm	150 mm	1	
TR0013-24		2,4 mm	150 mm	1	
TR0013-32		3,2 mm	150 mm	1	
TR0013-40		4 mm	150 mm	1	
TR0013-48		4,8 mm	150 mm	1	
TR0014-10		WL15	1 mm	175 mm	1
TR0014-16	1,6 mm		175 mm	1	
TR0014-20	2 mm		175 mm	1	
TR0014-24	2,4 mm		175 mm	1	
TR0014-32	3,2 mm		175 mm	1	
TR0014-40	4 mm		175 mm	1	
TR0014-48	4,8 mm		175 mm	1	
TR0017-10	WL20		1 mm	150 mm	1
TR0017-16		1,6 mm	150 mm	1	
TR0017-20		2 mm	150 mm	1	
TR0017-24		2,4 mm	150 mm	1	
TR0017-32		3,2 mm	150 mm	1	
TR0017-40		4 mm	150 mm	1	
TR0017-48		4,8 mm	150 mm	1	
TR0018-10		WL20	1 mm	175 mm	1
TR0018-16	1,6 mm		175 mm	1	
TR0018-20	2 mm		175 mm	1	
TR0018-24	2,4 mm		175 mm	1	
TR0018-32	3,2 mm		175 mm	1	
TR0018-40	4 mm		175 mm	1	
TR0021-10	WR2		1 mm	150 mm	1
TR0021-16			1,6 mm	150 mm	1
TR0021-20		2 mm	150 mm	1	
TR0021-24		2,4 mm	150 mm	1	
TR0021-32		3,2 mm	150 mm	1	
TR0021-40		4 mm	150 mm	1	
TR0021-48		4,8 mm	150 mm	1	
TR0022-10		WR2	1 mm	175 mm	1
TR0022-16	1,6 mm		175 mm	1	
TR0022-20	2 mm		175 mm	1	
TR0022-24	2,4 mm		175 mm	1	
TR0022-32	3,2 mm		175 mm	1	
TR0022-40	4 mm		175 mm	1	

WEAR PARTS KITS



STARTER KITS



9 - 20 - 20 HC - 25

CODE	Ø			
TT0101	1,6 mm	1/16"	WR2	1
TT0102	2,4 mm	3/32"	WR2	1

17 - 18 - 18 HC - 26

CODE	Ø			
TT0103	1,6 mm	1/16"	WR2	1
TT0104	2,4 mm	3/32"	WR2	1
TT0105	3,2 mm	1/8"	WR2	1

24 - 24W

CODE	Ø			
TT0203	1,6 mm	1/16"	WC20	1
TT0204	2,4 mm	3/32"	WC20	1

STARTER KITS



9 - 20 - 20 HC - 25

CODE	Ø			
TT0221	1,6 mm	1/16"	WR2	1
TT0222	2,4 mm	3/32"	WR2	1

17 - 18 - 18 HC - 26

CODE	Ø			
TT0223	1,6 mm	1/16"	WR2	1
TT0224	2,4 mm	3/32"	WR2	1

24 - 24W

CODE	Ø			
TT0226	1,6 mm	1/16"	WC20	1

MASTER KITS



9 - 20 - 20 HC - 25

CODE	Ø			
TT0109	1,0 mm - 1,6 mm - 2,0 mm - 2,4 mm - 3,2 mm			1

17 - 18 - 18 HC - 26

CODE	Ø			
TT0110	1,6 mm - 2,0 mm - 2,4 mm - 3,2 mm - 4,0 mm			1

STARTER KITS WITH BACK CAP



9 - 20 - 20 HC - 25

CODE	Ø			
TT0021	1,6 mm	1/16"	WC20	1
TT0022	2,4 mm	3/32"	WC20	1

17 - 18 - 18 HC - 26

CODE	Ø			
TT0023	1,6 mm	1/16"	WC20	1
TT0024	2,4 mm	3/32"	WC20	1
TT0025	3,2 mm	1/8"	WC20	1

SERIES 9 - 20 - 25 - SUPER 20 WEAR PARTS



STANDARD

	CODE		Gr	Ø		REF	
1	TC0012		4	6,4 mm 1/4"	30 mm	13N08	10
1	TC0013		5	8 mm 5/16"	30 mm	13N09	10
1	TC0014		6	9,8 mm 3/8"	30 mm	13N10	10
1	TC0015		7	11,2 mm 7/16"	30 mm	13N11	10
1	TC0016		8	12,7 mm 1/2"	30 mm	13N12	10
1	TC0017		10	15,7 mm 5/8"	30 mm	13N13	10
1	TC0096		4	6,5 mm 1/4"	48 mm	796F71	10
1	TC0097		5	8 mm 5/16"	48 mm	796F72	10
1	TC0098		6	9,5 mm 3/8"	48 mm	796F73	10
1	TC0101		4	6,5 mm 1/4"	63 mm	796F75	10
1	TC0102		5	8 mm 5/16"	63 mm	796F76	10
1	TC0103		4	6,5 mm 1/4"	89 mm	796F79	10
2	TE0003-05			0,5 mm .020"	21 mm	13N25	10
2	TE0003-10			1,0 mm .040"	21 mm	13N26	10
2	TE0003-16			1,6 mm 1/16"	21 mm	13N27	10
2	TE0003-20			2,0 mm 5/64"	21 mm	-	10
2	TE0003-24			2,4 mm 3/32"	21 mm	13N28	10
2	TE0003-32			3,2 mm 1/8"	21 mm	13N29	10

	CODE		Gr	Ø		REF	
3	TD0003-05			0,5 mm .020"	25 mm	13N20	10
3	TD0003-10			1,0 mm .040"	25 mm	13N21	10
3	TD0003-16			1,6 mm 1/16"	25 mm	13N22	10
3	TD0003-20			2,0 mm 5/64"	25 mm	-	10
3	TD0003-24			2,4 mm 3/32"	25 mm	13N23	10
3	TD0003-32			3,2 mm 1/8"	25 mm	13N24	10
4	TQ0001					598882	10
7	BW0063				147,5 mm	41V24	10
7	BW0064				53 mm	41V35	10
7	BW0065				17,5 mm	41V33	10
7	EA0129						10

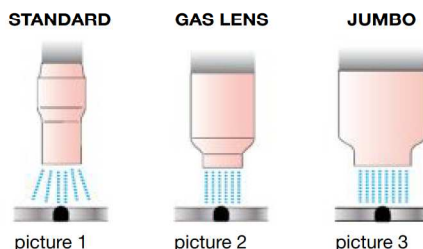
GAS LENS

	CODE		Gr	Ø		REF	
1	TC0041		4	6,4 mm 1/4"	25,5 mm	53N58	10
1	TC0042		5	8 mm 5/16"	25,5 mm	53N59	10
1	TC0043		6	9,8 mm 3/8"	25,5 mm	53N60	10
1	TC0044		7	11,2 mm 7/16"	25,5 mm	53N61	10
1	TC0045		8	12,7 mm 1/2"	25,5 mm	53N61S	10
2	TE0005-05			0,5 mm .020"	22 mm	45V41	10
2	TE0005-10			1,0 mm .040"	22 mm	45V42	10
2	TE0005-16			1,6 mm 1/16"	22 mm	45V43	10
2	TE0005-20			2,0 mm 5/64"	22 mm	-	10
2	TE0005-24	Cu + CuZn		2,4 mm 3/32"	22 mm	45V44	10
2	TE0005-32			3,2 mm 1/8"	22 mm	45V45	10
2	TE0025-16			1,6 mm 1/16"	22 mm	-	10
2	TE0025-20			2,0 mm 5/64"	22 mm	-	10
2	TE0025-24	Cu		2,4 mm 3/32"	22 mm	-	10
2	TE0025-32			3,2 mm 1/8"	22 mm	-	10
3	TD0003-05			0,5 mm .020"	25 mm	13N20	10
3	TD0003-10			1,0 mm .040"	25 mm	13N21	10
3	TD0003-16			1,6 mm 1/16"	25 mm	13N22	10
3	TD0003-20			2,0 mm 5/64"	25 mm	-	10
3	TD0003-24			2,4 mm 3/32"	25 mm	13N23	10
3	TD0003-32			3,2 mm 1/8"	25 mm	13N24	10
4	TQ0001					598882	10
7	BW0063				147,5 mm	41V24	10
7	BW0064				53 mm	41V35	10
7	BW0065				17,5 mm	41V33	10
7	EA0129						10

GAS LENS XL (JUMBO)

	CODE		Gr	Ø		REF	
1	TC0118		8	12,7 mm 1/2"	48 mm	57N74	10
1	TC0119		10	15,7 mm 5/8"	48 mm	53N88	10
1	TC0120		12	19,5 mm 3/4"	48 mm	53N87	10
2	TE0088-16			1,6 mm 1/16"	40 mm	45V116S	2
2	TE0088-24			2,4 mm 3/32"	40 mm	45V64S	2
2	TE0088-32			3,2 mm 1/8"	40 mm	-	2
3	TD0088-16			1,6 mm 1/16"	40 mm	13N22L	10
3	TD0088-20			2,0 mm 5/64"	40 mm	-	10
3	TD0088-24			2,4 mm 3/32"	40 mm	13N23L	10
3	TD0088-32			3,2 mm 1/8"	40 mm	13N24L	10
4	TQ0026					54N6320	10
7	BW0063				147,5 mm	41V24	10
7	BW0064				53 mm	41V35	10
7	BW0065				17,5 mm	41V33	10
7	EA0129						10

Gas protection flow is usually guttered by a STANDARD ceramic nozzle (picture 1). Such flow is affected by turbulences of head torch which are caused by the inlet pressure. In order to assure an uniform gas distribution, above all in stainless steel, titanium and aluminium alloys welding, we suggest the use of GAS LENS spare parts. The electrode holder equipped with a gas lens net, uniformes the flow (picture 2) and aid to save the protection gas. Where permitted by external dimensions, it is recommended the JUMBO version which increases the protected surface with advantage for welding quality (picture 3).



TIG BLISTERED WEAR PARTS



CODE		DESCRIPTION	SIZE	PCS X	PK X
BW0056P		tig cap 58 mm	17 - 18 - 26	3	10
BW0064P		back cap 53 mm	9 - 20	3	10
BW0065P		back cap 17,5 mm	9 - 20	3	10
BW0067P		back cap 22,5 mm	17 - 18 - 26	3	10
TC0003P		gr 5	17 - 18 - 26	6	10
TC0004P		gr 6	17 - 18 - 26	6	10
TC0005P		gr 7	17 - 18 - 26	6	10
TC0006P		gr 8	17 - 18 - 26	6	10
TC0007P		gr 10	17 - 18 - 26	6	10
TC0008P		gr 12	17 - 18 - 26	6	10
TC0012P		gr 4	9 - 20	6	10
TC0013P		gr 5	9 - 20	6	10
TC0014P		gr 6	9 - 20	6	10
TC0015P		gr 7	9 - 20	6	10
TC0016P		gr 8	9 - 20	6	10
TC0017P		gr 10	9 - 20	6	10
TD0001P16		Ø 1.6	17 - 18 - 26	4	10
TD0001P20		Ø 2.0	17 - 18 - 26	4	10
TD0001P24		Ø 2.4	17 - 18 - 26	4	10
TD0001P32		Ø 3.2	17 - 18 - 26	4	10
TD0001P40		Ø 4.0	17 - 18 - 26	4	10
TD0003P16		Ø 1.6	9 - 20	4	10
TD0003P20		Ø 2.0	9 - 20	4	10
TD0003P24		Ø 2.4	9 - 20	4	10
TD0003P32		Ø 3.2	9 - 20	4	10

CODE		DESCRIPTION	SIZE	PCS X	PK X
TE0001P16		Ø 1.6	17 - 18 - 26	3	10
TE0001P20		Ø 2.0	17 - 18 - 26	3	10
TE0001P24		Ø 2.4	17 - 18 - 26	3	10
TE0001P32		Ø 3.2	17 - 18 - 26	3	10
TE0001P40		Ø 4.0	17 - 18 - 26	3	10
TE0003P16		Ø 1.6	9 - 20	3	10
TE0003P20		Ø 2.0	9 - 20	3	10
TE0003P24		Ø 2.4	9 - 20	3	10
TE0003P32		Ø 3.2	9 - 20	3	10
TQ0001P		insulator	9 - 20	3	10
TQ0002P		insulator	17 - 18 - 26	3	10

