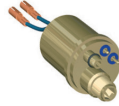


ERGOPLUS 500R

CE EN60974-7



CODE					
MB2632-030	50°	3 m	10'	EURO	1
MB2632-040	50°	4 m	12'		1
MB2632-050	50°	5 m	16.4'		1
MB2632-030-3000	30°	3 m	10'		1
MB2632-040-3000	30°	4 m	12'		1
MB2632-050-3000	30°	5 m	16.4'		1
MB2632-030-5005	L 50°	3 m	10'		1
MB2632-040-5005	L 50°	4 m	12'		1
MB2632-050-5005	L 50°	5 m	16.4'		1
MB2632-030-3005	L 30°	3 m	10'		1
MB2632-040-3005	L 30°	4 m	12'		1
MB2632-050-3005	L 30°	5 m	16.4'		1
MB2632-030-5016	XL 50°	3 m	10'		1
MB2632-040-5016	XL 50°	4 m	12'		1
MB2632-050-5016	XL 50°	5 m	16.4'		1
MB2632-030-3016	XL 30°	3 m	10'		1
MB2632-040-3016	XL 30°	4 m	12'	1	
MB2632-050-3016	XL 30°	5 m	16.4'	1	

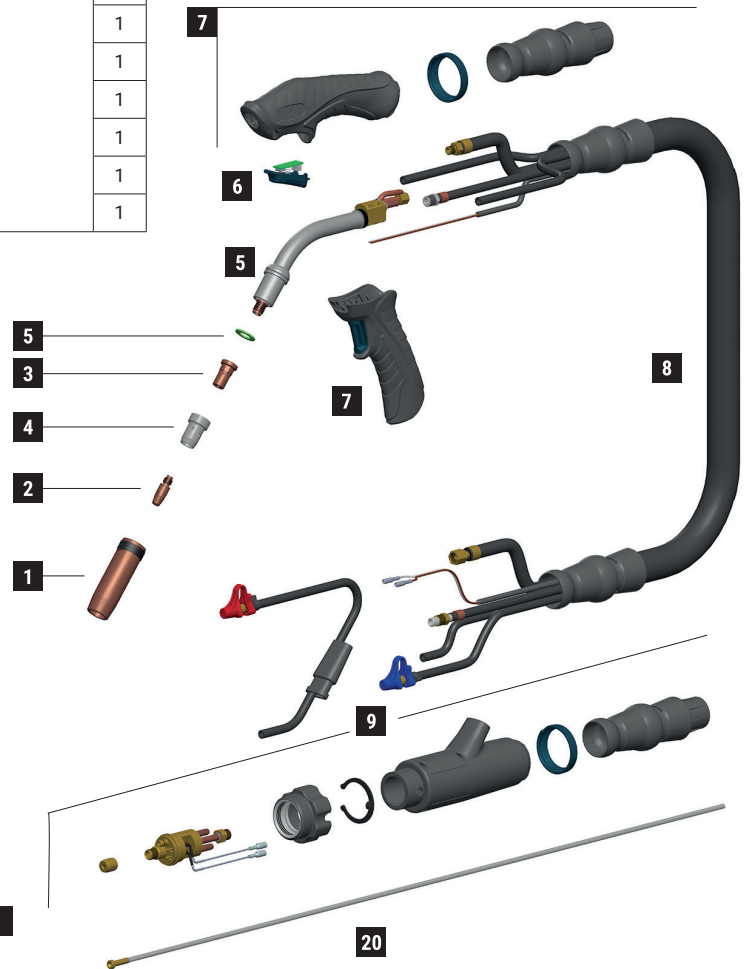


EURO

TECHNICAL DATA	
ERGOPLUS 500R	
	1,39 kg 3.06 lb
	113
	1,0 ÷ 2,4 mm .040" ÷ 3/32"
	500A CO ₂ - 450A Mix
	2÷4 bar
	1,6 l/min

MIG *Standard equipment in all torch packages*

MT0566



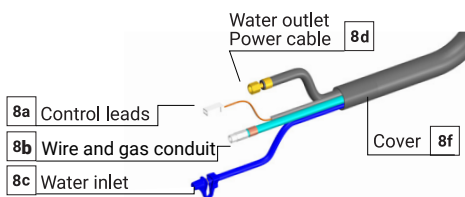
EURO

	CODE			Ø	↔	REF			
1	MC0568		quick release nozzle - 2,5 mm thickness	16 mm	5/8"	76 mm	3"	-	10
2	MD0005-82		M8 - CuCrZr	1,2 mm	.045"	30 mm	1"-3/16	140.0445	20
3	ME0390		M8 - copper			25 mm	31/32"	-	10
4	ME0579		ceramic	16 mm	5/8"	28 mm	1"-3/32	-	10
20	GM0530		uncoated steel liner	1,2 ÷ 1,6 mm	.045" ÷ 1/16"	3 m	10'		1
20	GM0531		uncoated steel liner	1,2 ÷ 1,6 mm	.045" ÷ 1/16"	4 m	12'		1
20	GM0532		uncoated steel liner	1,2 ÷ 1,6 mm	.045" ÷ 1/16"	5 m	16.4'		1

***Complete list of available consumables at the end of this section**

	CODE		
5	FB1278		Insulator 10
5	MG0301-SP		Ergoplus 500R torch head 50° 1
5	MG0302-SP		Ergoplus 500R torch head 30° 1
5	MG0303-SP		Ergoplus 500R torch head 50° L 1
5	MG0304-SP		Ergoplus 500R torch head 30° L 1
5	MG0305-SP		Ergoplus 500R torch head 50° XL 1
5	MG0306-SP		Ergoplus 500R torch head 30° XL 1
6	MT0594		trigger kit 1

	CODE		
7	MT0593		handle kit 1
7	MT0566		pistol grip 1
8	MN2018-030-SP		cable assembly - 3 m / 10' 1
8	MN2018-040-SP		cable assembly - 4 m / 12' 1
8	MN2018-050-SP		cable assembly - 5 m / 16.4' 1
9	AR0110-SP		EURO connector 1
9	BW0020		metal EURO nut 10
9	FA0026		liner nut M10x1 10
9	MT0564		back box kit 1



	CODE	↔
8a	BX1422-030-SP	3 m / 10'
8b	MH1262-030-SP	3 m / 10'
8c	QB0076	3 m / 10'
8d	QA0019	3 m / 10'
8f	MQ0125-030	3 m / 10'

	CODE	↔
8a	BX1422-040-SP	4 m / 12'
8b	MH1262-040-SP	4 m / 12'
8c	QB0077	4 m / 12'
8d	QA0020	4 m / 12'
8f	MQ0125-040	4 m / 12'

	CODE	↔
8a	BX1422-050-SP	5 m / 16.4'
8b	MH1262-050-SP	5 m / 16.4'
8c	QB0078	5 m / 16.4'
8d	QA0021	5 m / 16.4'
8f	MQ0125-050	5 m / 16.4'

STANDARD